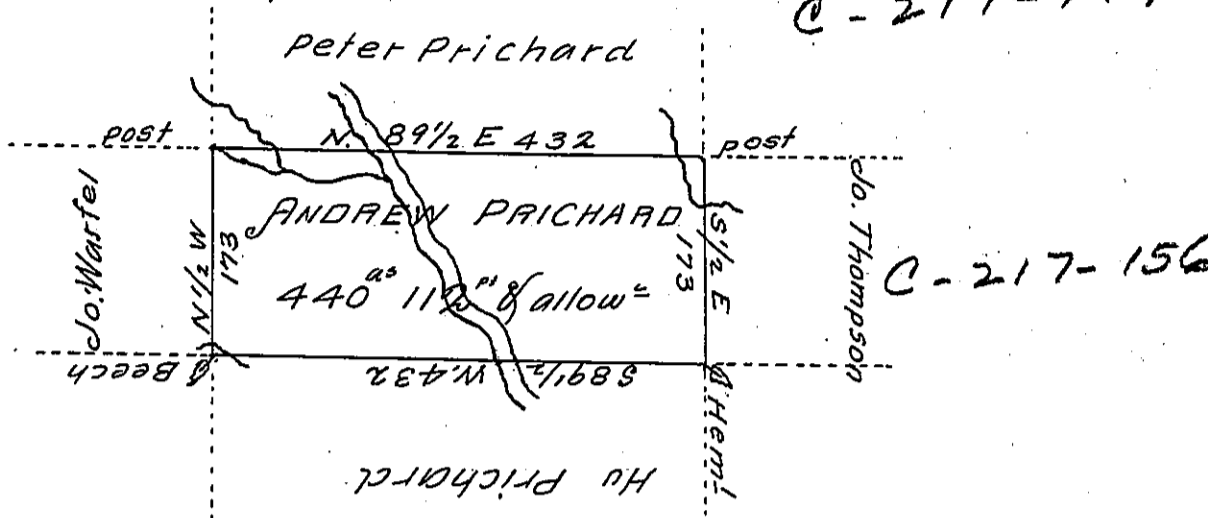


PAGE-183

C-217-147



A Draught of a tract of land called \_\_\_\_\_ situate in the County of Luzerne adjoining Hugh Prichard & others surveyed the 22<sup>nd</sup> day of September 1792 for Andrew Prichard in pursuance of a Warrant bearing date the 3<sup>d</sup> day of April 1792 containing Four hundred & Forty acres & one hundred & twelve perches & the allowance of six p. Cent &c.

Ant<sup>y</sup> Grothers D.S.

To  
 Dan<sup>l</sup> Brodhead Esq<sup>r</sup>  
 Surveyor General

IN TESTIMONY that the above is a copy of the original remaining on file in the Department of Internal Affairs of Pennsylvania, made conformably to an Act of Assembly approved the 16th day of February, 1833, I have hereunto set my Hand and caused the Seal of said Department to be affixed at Harrisburg, this second day of August 1906

*Geac R Brown*  
 Secretary of Internal Affairs.